



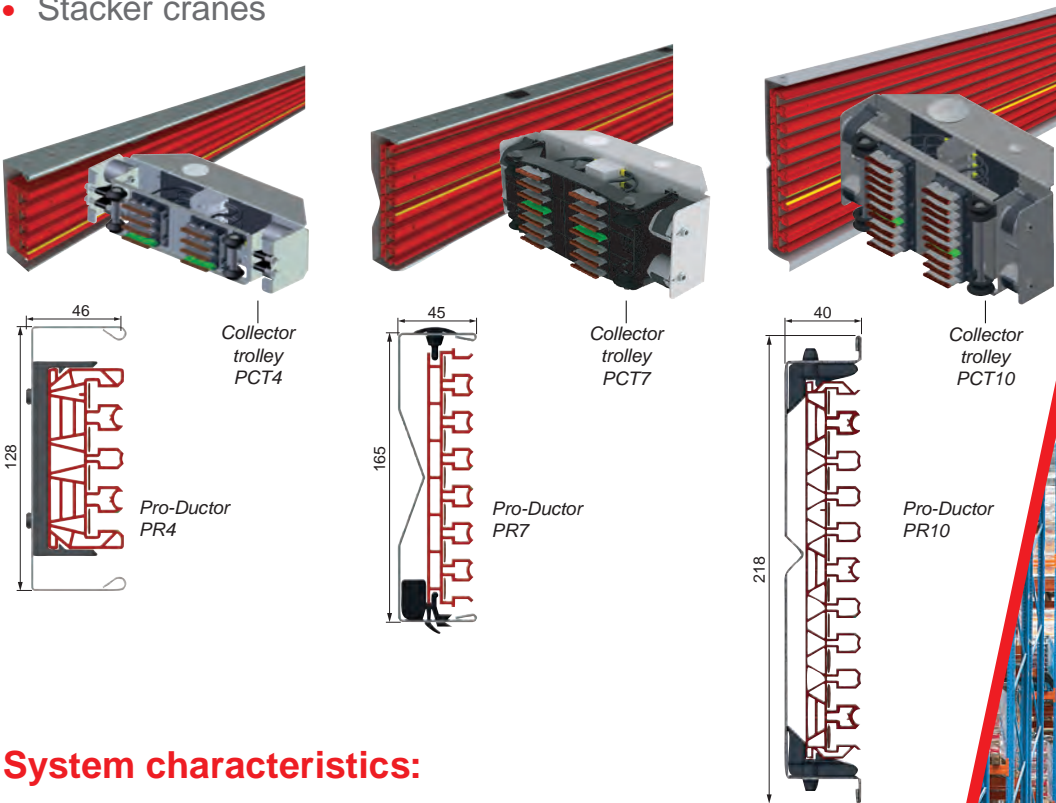
Akapp-Stemmann
A Wabtec Activity

Conductor system Pro-Ductor®

With continuous copper conductors for high speeds and optimal reliability

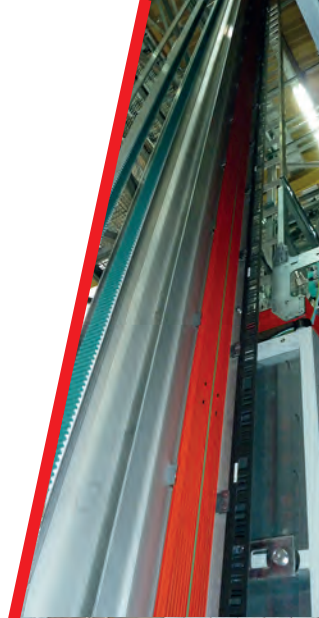
Developed for use in demanding intralogistic applications, such as:

- Automated warehouses (AS/RS)
- Conveyor systems
- Stacker cranes



System characteristics:

- Continuous smooth copper conductors, without connections
- Copper current capacities 50A, 80A, 125A, 160A and 200A
- Unique wheel guided collector trolleys, for optimal contact
- Very suitable for cold stores and aisle changing cranes
- Suitable for temperatures from -30°C to +80°C
- Travel speed up to 500m/min. possible
- Extremely long carbon brush duty life
- Ideal for optional positioning system
- Low Total Cost of Ownership (TCO)
- Quick assembly tools available
- Very low maintenance costs

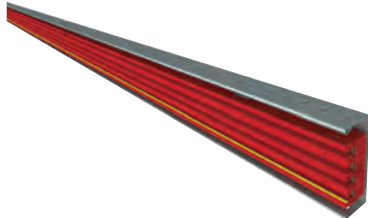


Pro-Ductor[®] conductor bar systems

- Dependable conductor bar systems for intralogistics - warehouse automation
- Power feed and control for applications like
 - Automated Storage and Retrieval Systems (AS/RS)
 - Conveyor systems
 - Stacker cranes

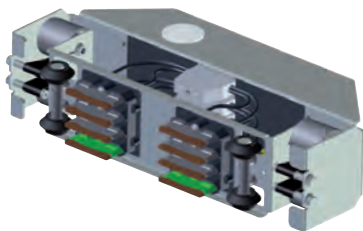


PR 4 Series



General specifications

- PVC housing with 4 copper channels
- Temperature range: -30 °C up to +60 °C
- Continuous copper conductors
- Current capacity 50A up to 200A
- Support distance up to 3300 mm (with support profile)
- Ideal for optional positioning system



Collector trolleys PCT4

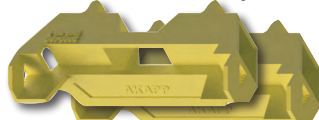
- Wheel guided collector trolley
- Travel speed up to 500 m/min.
- Perfect signal transmission
- Very low maintenance costs
- Suitable for curves, switches en transfers

Positioning Tool for PCT4 and PCT7

- Easy and secure aligning of the collector trolley



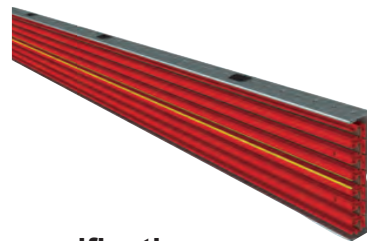
PR4 - Art.no. 2060470 (set 2 pcs)



PR7 - Art.no. 2060480 (set 2 pcs)

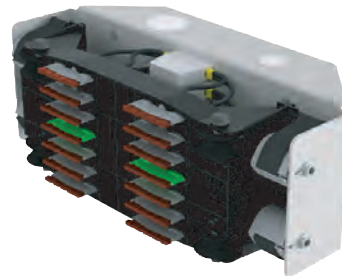


PR 7 Series



General specifications

- PVC housing with 7 copper channels
- Temperature range: -30 °C up to +60 °C
- Continuous copper conductors
- Current capacity 50A up to 400A
- Support distance up to 3300 mm (with support profile)
- Ideal for optional positioning system



Collector trolleys PCT7

- Wheel guided collector trolley
- Travel speed up to 500 m/min.
- Perfect signal transmission
- Very low maintenance costs
- Suitable for curves, switches en transfers

Mark template for PR4 and PR7 housing

- Precise marking of the housing after cutting
- Simply adapt your cutted lengths (on site)



PR4 - Art.no. 2080450



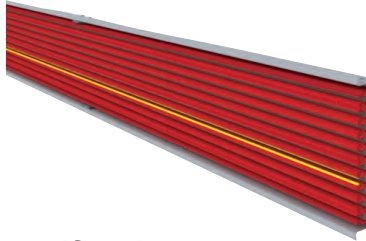
PR7 - Art.no. 2080460

Benefits and features

- Most reliable conductor bar systems, with low Total Cost of Ownership (TCO)
- Uninterrupted copper conductors, low maintenance costs and extremely long carbon brush life
- Unique wheel guided collector trolleys, for optimal contact and speeds up to 500 m/min.
- Ideally suited and proven reliable for both control and data signal transmission
- Field service support for installation and maintenance

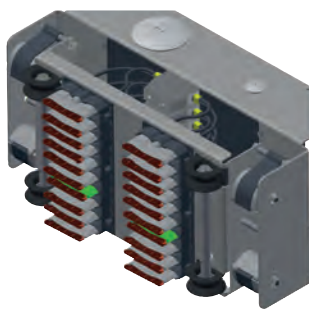


PR 10 Series



General specifications

- PVC housing with 10 copper channels
- Temperature range: -30 °C up to +60 °C
- Continuous copper conductors
- Current capacity 50A up to 400A
- Support distance up to 3300 mm (with support profile)
- Ideal for optional positioning system

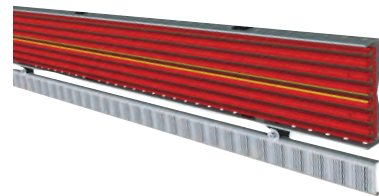


Collector trolleys PCT10

- Wheel guided collector trolley
- Travel speed up to 500 m/min.
- Perfect signal transmission
- Very low maintenance costs
- Suitable for curves, switches en transfers



Positioning with barcode



Making positioning easy and accurate!

A metal U-profile, provided with barcode tape, is mounted at the bottom or on top of the support profile. A reader fitted on the (warehouse) crane reads the barcode while the crane moves and determines the crane position relative to the barcode tape. This information can be sent through the Pro-Ductor system to a processor for further use with additional software.

Key features:

- Applicable with all Pro-Ductor systems
- To be mounted at the bottom or top of the support profile
- Barcode tape pre-mounted on metal U-profile
- Applicable for every track length

Benefits:

- Easy to install; also in existing systems
- Absolute positioning of the crane
- Reliable performance
- Accurate positioning (+/- 1mm tolerance)
- Low maintenance

Cleaner for PR4 and PR7 housing

- Easy and fast cleaning of your system

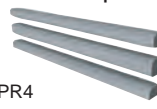


PR4 - Art.no. 2050650

PR7 - Art.no. 2010160

Repair unit for PR4, PR7 and PR10

- Practical insert in case of damage to the housing.
- Just replace the damaged spot for this item.




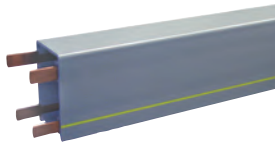
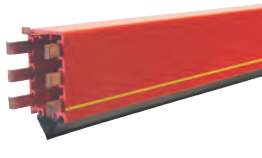
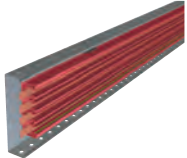
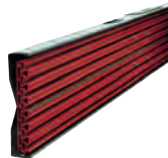
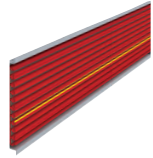



PR4
Art.no. 2060404 (set)



PR7
Art.no. 2060707 (set)



PR10
Art.no. 2061010 (set)

Industrial Conductor bar systems			
Multipole systems continuous conductors and connectable sections	Multiconductor	4-Ductor	Click-Ductor
			
insulated			
Standard length housing:	4000 mm	4000 mm	3000 mm / 4000 mm
Number of poles max.:	7 (continuous conductors)	4 (continuous conductors)	7 (connectable sections)
Current capacity (80% D.C.): Current capacity parallel (80% D.C.):	35-50-80-125-160A 250-320A	35-50-80-125-160A	50-80-110-125-160-200A *) 220-250-320-400A *)
Nom. voltage max.:	690V (CE/CCC) / 600V (UL)	690V (CE/CCC) / 600V (UL)	690V (CE/CCC) / 600V (UL)
Travel speed max.:	500 m/min	60 m/min	250 m/min
Ambient temperature:	-30 up to +60 °C (Vicat -20 up to +80 °C)	-30 up to +60 °C	-20 up to +50 °C
			*) 200A and 400A 60% D.C.
Intra Logistics Conductor bar systems			
Multipole systems continuous conductors	Pro-Ductor PR4	Pro-Ductor PR7	Pro-Ductor PR10
			
insulated			
Standard length housing:	4000 mm	4000 mm	4000 mm
Number of poles max.:	4 (continuous conductors)	7 (continuous conductors)	10 (continuous conductors)
Current capacity (80% D.C.): Current capacity parallel (80% D.C.):	50-80-125-160-200A	50-80-125-160-200- 250-320-400A	50-80-125-160-200- 250-320-400A
Nom. voltage max.:	690V (CE/CCC) / 600V (UL)	690V (CE/CCC) / 600V (UL)	690V (CE/CCC) / 600V (UL)
Travel speed max.:	500 m/min	500 m/min	500 m/min
Ambient temperature:	-30 up to +60 °C	-30 up to +60 °C	-30 up to +60 °C
Spring cable reels			
Series AV numerous options	AV19	AV28	AV50
			
with or without cable			
Cable length max:	30 m	84 m	115 m
Number of poles max.:	52 (mA-10A) / 8 (50A)	52 (mA-10A) / 8 (50A)	52 (mA-10A) / 8 (200A)
Current capacity range:	4 mA - 50 A	4 mA - 50A	4 mA - 200A
Min. / max. voltage:	24V - 415V	24V - 500V	24V - 660V
Travel speed max.:	60 m/min	60 m/min	60 m/min
Material:	galvanised steel, stainless steel, polyester coated steel	galvanised steel, stainless steel, polyester coated steel	galvanised steel, stainless steel, polyester coated steel
Field Service			
<p>The high-quality Akapp-Stemmann conductor systems are used worldwide in numerous industrial sectors, often under extreme conditions. Our power supply systems are designed to ensure continuity in the electrical supply and control of devices such as cranes, hoists and concrete furniture under demanding conditions. However, a perfectly functioning system is not possible without (periodic) maintenance. We are happy to take care of this for you!</p> <p>If you want to know more about the advantages of (periodic) maintenance of your busbar systems or all other possibilities that our service department has for you, please contact us.</p>			