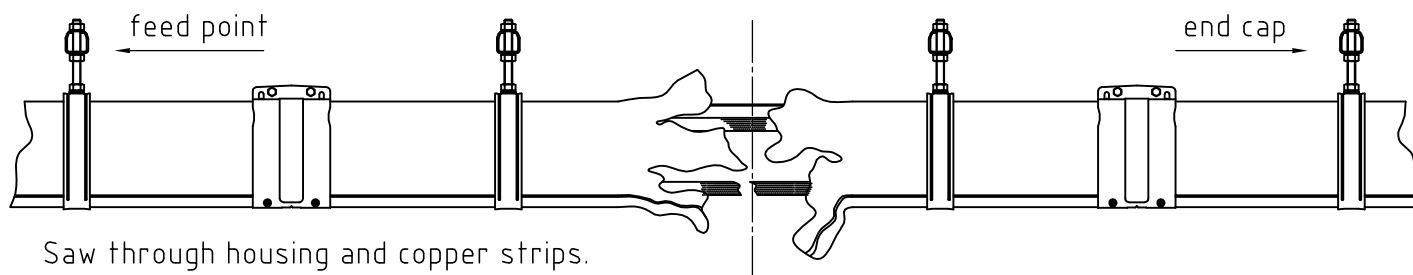
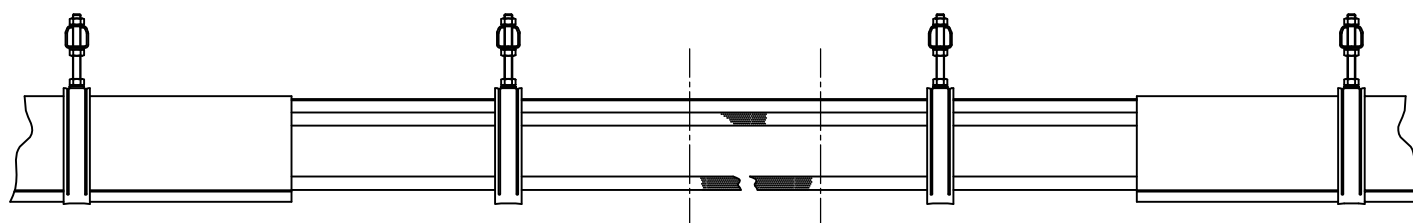


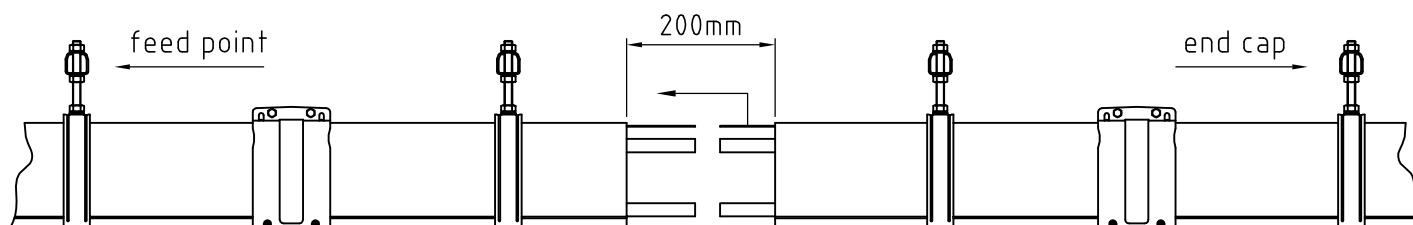
Instruction Multiconductor repair: damaged housing and damaged copper strips



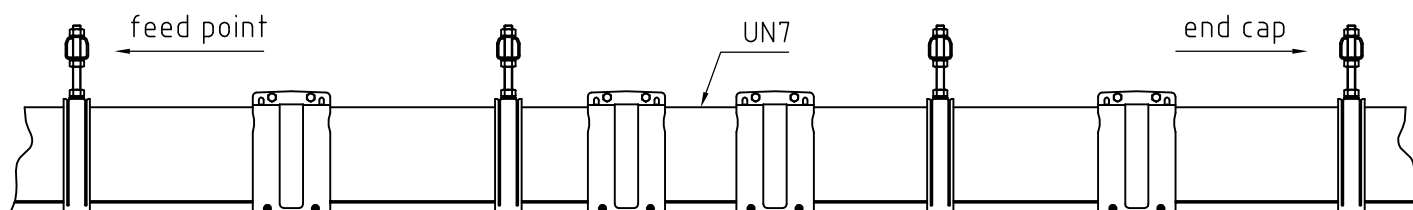
Saw through housing and copper strips.
Remove joint clamps and profiles



Cut of damaged length of copperstrips (after short cut).



Mount new or cut-off profiles with a gap of 20cm equally divided over the two sides of the welding spot and pull the copperstrips in position for welding. For welding we have separate instructions.



After welding: place a 200mm long inspection unit UN7 (art. no. 1015030) with 2 joint clamps.
Check if there is enough space for expansion/contraction between the joint clamps and sliding hangers,
if necessary move the concerning support brackets with sliding hanger.